



HikCentral

Central Management System

HIKVISION®

HikCentral совместима со всей линейкой продуктов Hikvision, включая DVR, NVR, IP-камеры, PTZ-камеры, устройства отображения, устройства наблюдения за трафиком, тепловизионные камеры, устройства обработки данных, CVR, EZVIZ и устройства контроля доступа.

Best User Experience

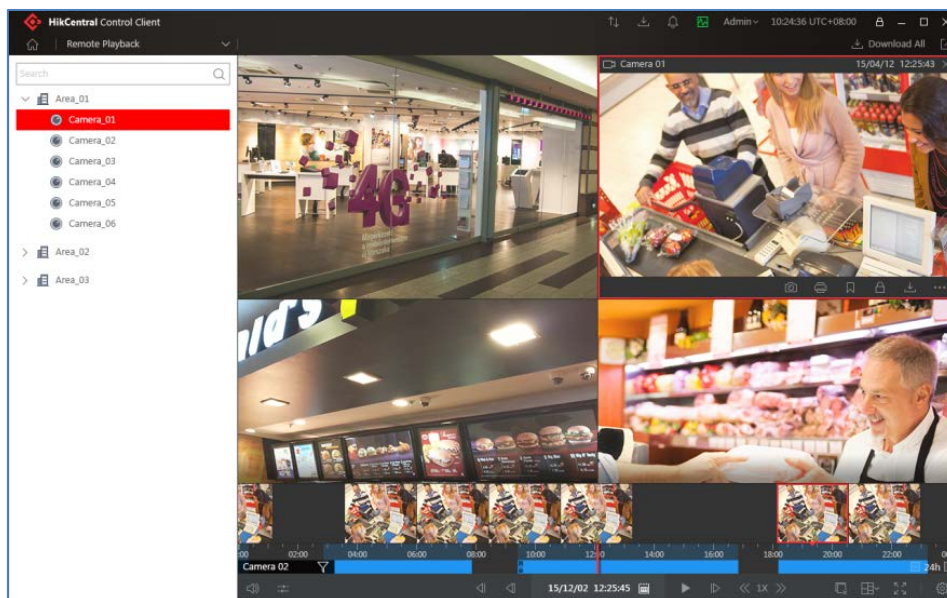
- User-defined live view and playback functionality enhances video monitoring flexibility
- Alarm notifications generate instant alerts during live view
- Seamless channel switching from live view to playback
- Auto-switching of cameras by area allows operator to monitor multiple video feeds simultaneously without manual intervention
- Powerful thumbnail and timeline search capabilities facilitate quick playback positioning
- Export multiple video channels simultaneously in playback view

Powerful Surveillance Management

- Capacity to mark key evidence manually and/or automatically using alarm-based tagging function
- Protect video files from being overwritten by locking video clips for evidence management
- Search videos by tag, locked status, time interval, time, and file
- “After-the-fact” VCA Search of playback video for motion analysis, line crossing detection, and intrusion detection
- Free mobile client enables video and alarm monitoring anytime, anywhere

Powerful Centralized Management

- Interactive mapping enables intuitive management of alarm inputs/outputs, cameras, hot regions, and historical alarm searching
- Unified alarm center provides real-time alarm management by using an intuitive notification of related pictures, e-map, video clips, and more
- Seamless integration with active directory for user management
- Centralized license plate recognition search, heat map analysis, and people counting statistics extend system functionality



Synchronized playback of multiple video camera feeds

High Reliability

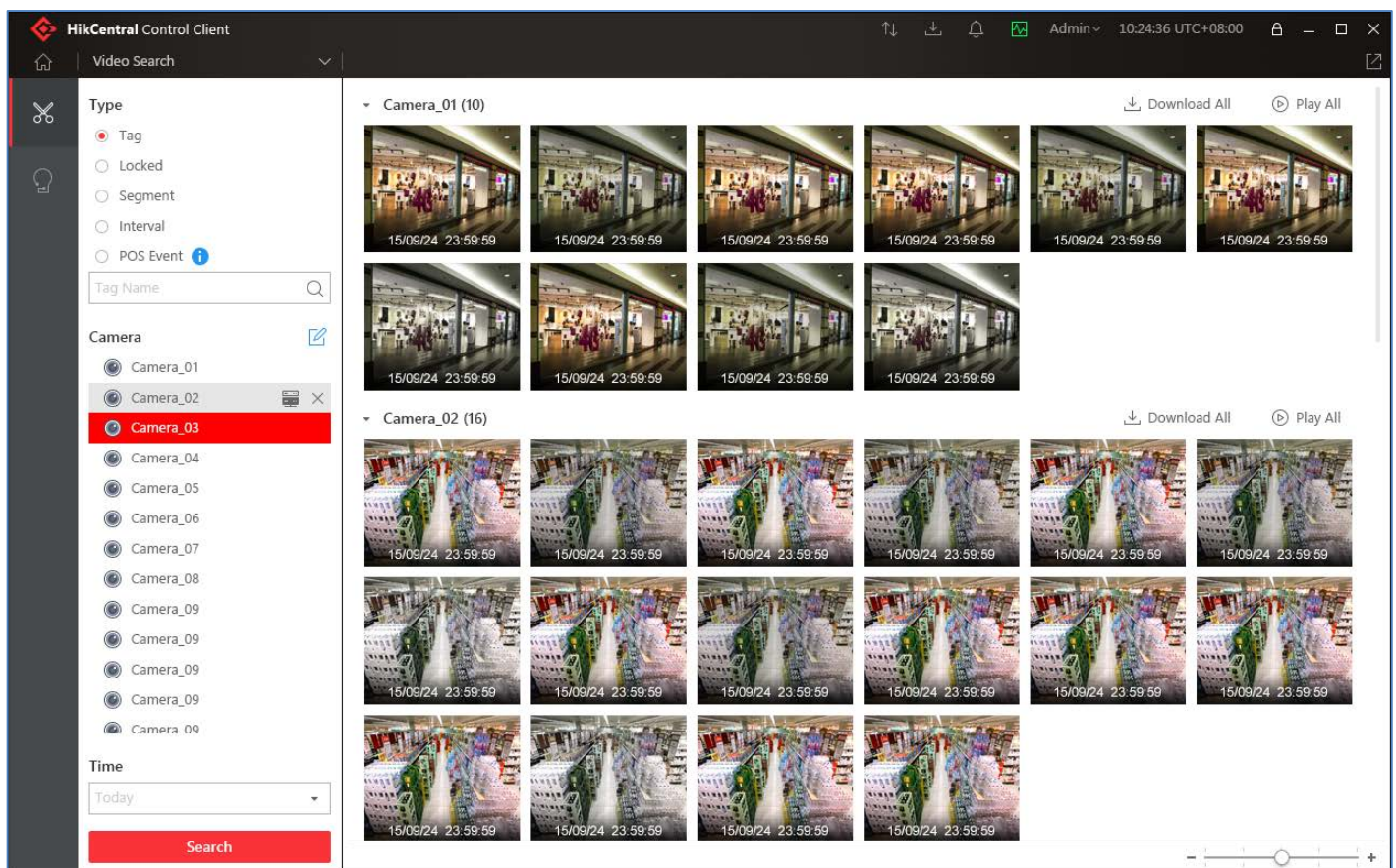
- Strict system test for pre-installation of HikCentral on the Hikvision Management Server
- System support for CVR N+1 Hot Spares for storage redundancy
- Support for Windows cluster and Rose Replicator solutions to augment system reliability

High Scalability

- Expand channel numbers by adding NVR, DVR, IPC, and Blazer Express
- Extend central storage by adding a Central Video Recorder (CVR)
- High video throughput with minimal CPU and RAM requirements
- Support for up to 3000 channels and 1024 devices per server
- Expand system video input/output by adding Streaming Media Server (SMS); each SMS can support up to 300 x 2 Mbps video inputs and/or outputs

Fast-Deployment

- Pre-loaded software and pre-activated license (optional)
- Lightweight installation package minimizes installation time
- Web client enables management and configuration anytime, anywhere
- One-step configuration automatically detects devices and allows quick access to live view and video playback
- Intuitive Flat GUI design simplifies system configuration and user experience to reduce cost of training
- WAN access port mapping for seamless deployment of remote access



VCA search of playback videos for motion analysis, line crossing, and intrusion detection



Intuitive management of alarm inputs, alarm outputs, cameras, hot regions, and historical events

Specifications

HikCentral Specifications	Details
Maximum number of IP cameras / NVRs / DVRs / Blazer Express Connections	1024
Maximum number of channels	3000
Maximum number of alarm inputs / outputs	3000
Maximum number of areas	3000
Maximum number of roles	64
Maximum number of uses	10000
Maximum number of e-maps	1024
Maximum number of Central Video Recorders	32
Maximum number of Streaming Server connections	10000
Maximum number of concurrent Web Client or Control Client connections	100
Maximum number of concurrent mobile client connections	100
Maximum user permission levels	100

Specification of Hikvision Management Server	Details
CPU	E3-1220 V5 (four-core 3.0GHz)
Operation system	Windows Server 2012 R2
Memory	16 GB DDR4
Storage	1 TB SATA x 2
Raid support	H330 Raid Controller with Raid 1
NIC	1 GbE x 4
Chassis	1 U, rack mount
Pre-loaded license	64 / 300 channels
License extendable to	3000 channels

Model Number	Recommended Firmware Version (or higher)	Model Number	Recommended Firmware Version (or higher)
Pro Series		TurboHD 3.0 Series	
DS-9616NI-ST	3.4.5	DS-7204HGHI-SH	V3.1.17
DS-9632NI-ST	3.4.5	DS-7216HGHI-SH	V3.1.17
DS-9664NI-ST	3.4.5	DS-7208HGHI-SH	V3.1.17
DS-9632NI-I8	3.4.92	DS-7204HUHI-F1/N	V3.4.84
DS-9664NI-I8	3.4.92	DS-7208HUHI-F2/N	V3.4.84
DS-96128NI-I24/H	3.2.7*	DS-7216HUHI-F2/N	V3.4.84
DS-96256NI-I24/H	3.2.7*	DS-7308HUHI-F4/N	V3.4.84
		DS-7316HUHI-F4/N	V3.4.84
Value Series		DS-9008HUHI-F8/N	V3.4.84
DS-7604NI-E1/4P	3.4.92	DS-9016HUHI-F8/N	V3.4.84
DS-7608NI-E2/8P	3.4.92	DS-7308HQHI-SH	V3.1.17
DS-7616NI-E2/16P	3.4.92	DS-7316HQHI-SH	V3.1.17
DS-7608NI-I2/8P	3.4.92	DS-7332HGHI-SH	V3.1.17
DS-7616NI-I2/16P	3.4.92	DS-9008HQHI-SH	V3.1.17
DS-7716NI-I4/16P	3.4.92	DS-9016HQHI-SH	V3.1.17
DS-7716NI-SP/16	3.4.5		
DS-7732NI-I4	3.4.92	TurboHD 4.0 Series	
DS-7732NI-I4/16P	3.4.92	DS-7204HQI-K1	V3.5.11
		DS-7208HQI-K2	V3.5.11
Decoders		DS-7216HQI-K2	V3.5.11
DS-6401HDI-T	Not compatible	DS-7204HUI-K1	V3.5.11
DS-6404HDI-T	Not compatible	DS-7208HUI-K2	V3.5.11
DS-6408HDI-T	Not compatible	DS-7216HUI-K2	V3.5.11

* New firmware to be released in Q3 2017.